



COMPACT LIGHT WEIGHT SOLUTIONS



THE POWERFUL LIGHT WEIGHT CRANE

- ✓ Greater Efficiency due to Low weight design
- ✓ Precise and Maintenance friendly worm gear slewing drive.
- ✓ For Light Vehicles without PTO
- ✓ Warning Light when stabilizers are closed (CE)
- ✓ * Hydraulic overload Limiting Device (CE)
- ✓ Powerful 800 kg winch available with an extension stop and limit switch.
- ✓ Practical, easy-to-use crane for day-to-day needs.
- ✓ Hand Held Radio Remote Control Unit with Proportional Speed Control
- ✓ ETR DC Powerpack Option
- ✓ Various Base mounting and Stabilizer options .

* Not for HA 10

COMPACT, LIGHT & EASY TO USE



HA 15

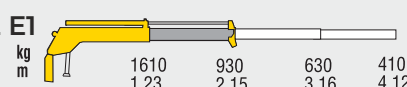
HA 21

Technical drawing of a circular mechanical component. The main view is a circle with a diameter of 431. Key dimensions include: 118 (top flange width), 260 (top flange thickness), 230 (inner bore diameter), 200 (inner bore length), 135 (bottom flange width), 175 (bottom flange thickness), 310 (bottom flange diameter), 230 (inner bore diameter), 160 (bottom flange thickness), and 335° (bottom flange angle). A cross-section view (PM) is shown on the right, indicating a 335° angle.

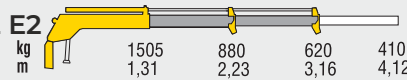
Version	A (mm)	H (mm)	MinExt (mm)	MaxExt (mm)
E1	695	1503	1245	2170
E2	710	1510	1327	3177
E3	868	1522	1398	4173



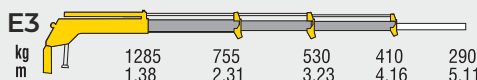
HA22 E1



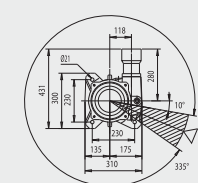
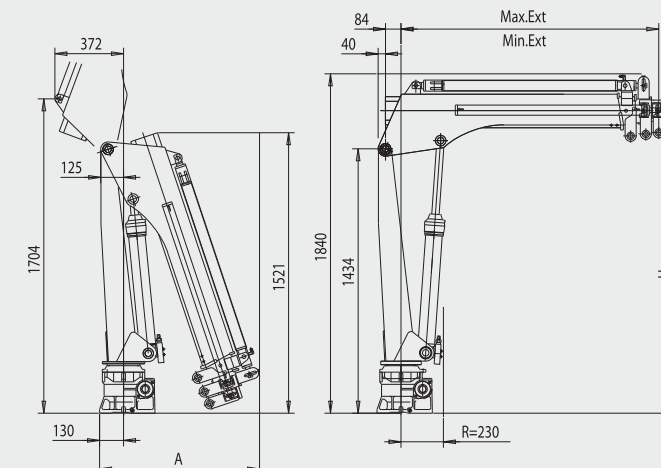
HA22 E2



HA22 E3

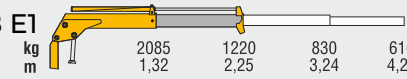


Lifting Moment	(tm)	2.00	1.96	1.74
Max. vertical reach	(m)	3.56	4.51	5.45
Slewing angle	(°)	335	335	335
Slewing time	(s/180°)	10	10	10
Max. working heel	(°)	3	3	3
Working pressure	(bar)	160	160	150
Oil tank capacity	(l)	17.5	17.5	17.5
Max. oil flow	(l/m)	8	8	8
Standard crane weight without stabilizers	(kg)	216	243	265

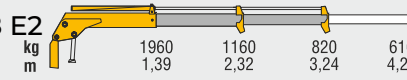


Version	A (mm)	H (mm)	MinExt (mm)	MaxExt (mm)
E1	695	1503	1245	2170
E2	710	1510	1327	3177
E3	868	1522	1398	4173

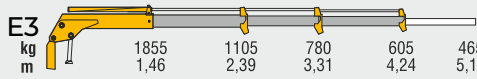
HA28 E1



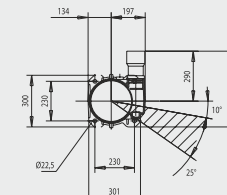
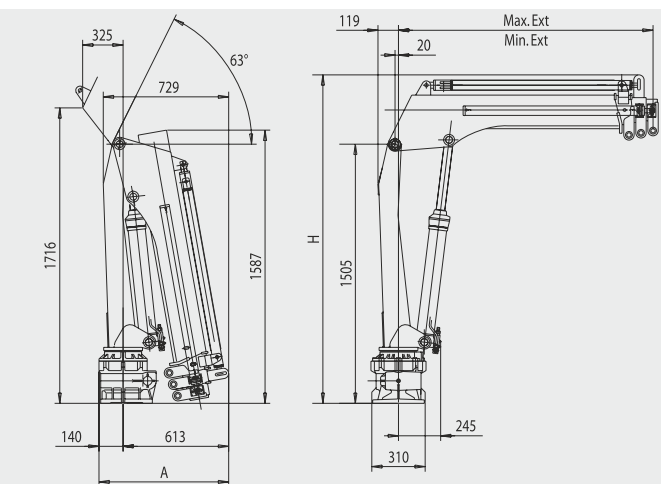
HA28 E2



HA28 E3

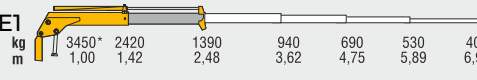


		HA28 E1	HA28 E2	HA28 E3
Lifting Moment	(tm)	2.75	2.72	2.71
Max. vertical reach	(m)	3.58	4.49	5.39
Slewing angle	(°)	335	335	335
Slewing time	(s/180°)	16	16	16
Max. working heel	(°)	3	3	3
Working pressure	(bar)	160	160	150
Oil tank capacity	(l)	17.5	17.5	17.5
Max. oil flow	(l/m)	10	10	10
Standard crane weight without stabilizers	(kg)	263	298	323

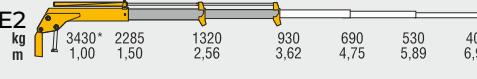


Version	A (mm)	H (mm)	MinExt (mm)	MaxExt (mm)
E1	730	1908	1339	2664
E2	753	1908	1409	3259
E3	753	1908	1479	4254

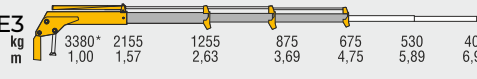
HA33 E1



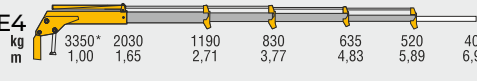
HA33 E2



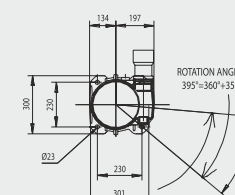
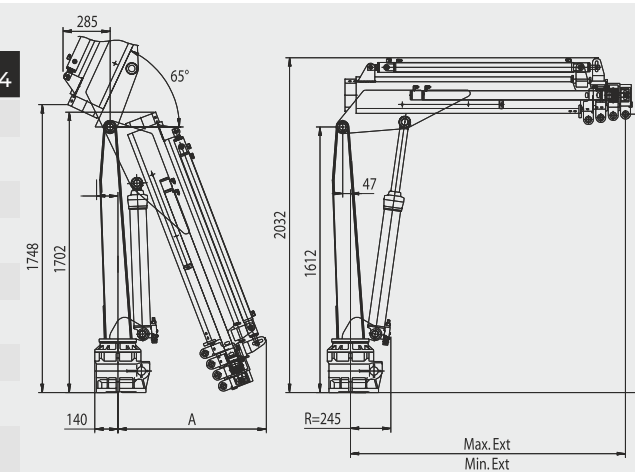
HA33 E3



HA33 E4



		HA33 E1	HA33 E2	HA33 E3	HA33 E4
Lifting Moment	(tm)	3.45	3.43	3.38	3.35
Max. vertical reach	(m)	3.94	4.98	6.01	7.04
Slewing angle	(°)	395	395	395	395
Slewing time	(s/180°)	16	16	16	16
Max. working heel	(°)	3	3	3	3
Working pressure	(bar)	175	175	175	175
Oil tank capacity	(l)	17.5	17.5	17.5	17.5
Max. oil flow	(l/m)	10	10	10	10
Standard crane weight without stabilizers	(kg)	305	339	371	399



Version	A (mm)	H (mm)	MinExt (mm)	MaxExt (mm)
E1	836	1657	1443	2503
E2	900	1670	1518	3638
E3	900	1682	1593	4773
E4	900	1690	1668	5908

Designed in accordance with EN12999 | Design class: HC1-HD4 | Hexagonal section extensions | Control panel with customizable position | ABS protective cover on controls | Worm and gear rotation | Swivel stabilizer foot

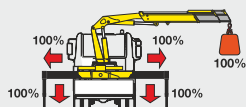
Flanged valve | Sliding pads on telescopic extensions | Assembly kit | Self-lubricating bushings | Independent telescopic cylinders | Light indicator for correct stabilizer stowing (CE) | Mechanical rotation limitation (CE)





STABILITY CONTROL SYSTEM (CE)

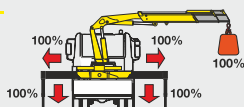
HM System



The HM System integrated in the load limiting device checks the stabilizers' positions. Only when all beams are fully open and all stabilizers are on the ground the crane can operate and lift loads.



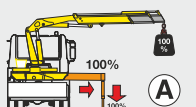
HML System X



The HML System integrated in the load limiting device checks the stabilizers' positions. Only when all beams are fully open and all stabilizers are on the ground the crane can operate and lift loads.



HL System X



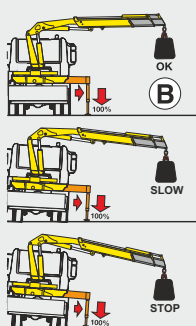
The HL system checks the stabilizers' positions and the truck's inclination. According to the beams' positions, the system allows two operating modes:

Mode A - all beams fully open and all stabilizers feet on the ground.

Mode B - stabilizers on the ground only.

In mode A: the load limiting device stops the crane when the crane reaches 100% of the nominal capacity.

In mode B: a dedicated sensor monitors the truck's inclination. The load limiting device stops the crane before it reaches an inclination angle dangerous for stability, or when the crane reaches its nominal capacity.



ACCESSORIES

- Radio remote control | Oil tank | Supplementary element activation
- Turning stabilizers (HA10) | Electro-hydraulic power pack | Winch
- Extra cross beams | Tubular base for crane stabilizers(single or double)
- Manually opening stabilizers | Manually opening and turning outriggers

RADIO REMOTE CONTROL

- ✓ Compact dimensions and reduced weight
- ✓ Proportional speed control of any single movement
- ✓ Stabilizer control by radio



ELECTRO-HYDRAULIC POWERPACK

